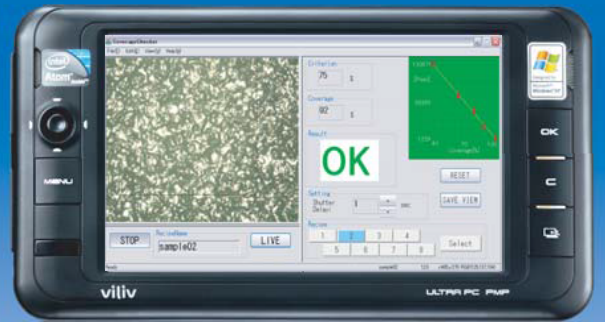


# Coverage Measurement Device



\*Image only

COVERAGE CHECKER



# COVERAGE CHECKER

## Outline / Feature

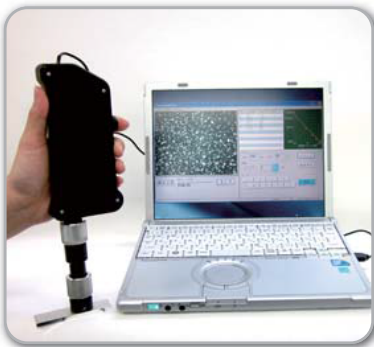


Image only  
(PC is not included in the set)

Coverage Checker is designed for easy and precise coverage measurement instead of human eyes.

By registering visual inspection coverage results into Coverage Checker in advance, coverage value is calculated from correlation between coverage data table and captured target image.

- Consistent measurement result by any operator
- COVERAGE CHECKER is available for coil spring bore and narrow area.
- COVERAGE CHECKER can measure hole inside with a special attachment.
- Visual coverage measurement requires much experience and skill. With COVERAGE CHECKER, even beginner can measure coverage as well as skilled operator. It is also a valuable educational tool.
- USB connection to your PC ( Windows 10 and 11 64bit ).

## Function

Coverage Checker has "Measurement mode" and "OK/NG mode".

In "Measurement mode", result is shown in coverage value calculated from recipe.

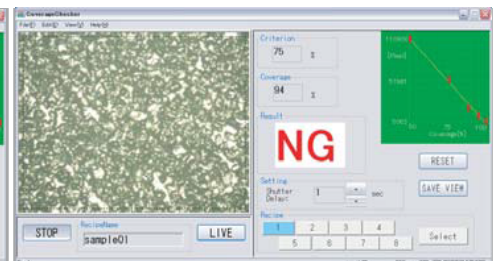
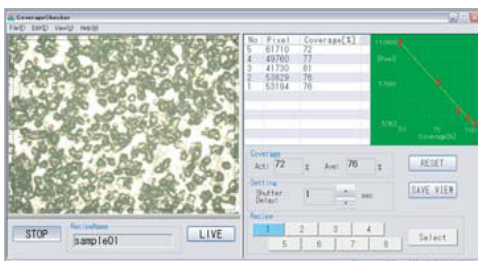
In "OK/NG mode", result is shown in pass/fail (OK/NG).

(1) Measurement mode:

(2) OK/NG mode:

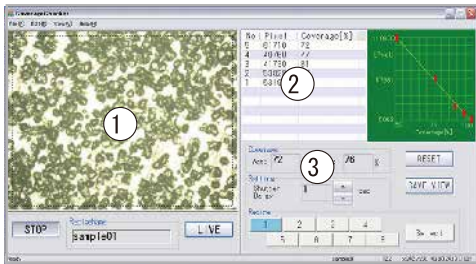
Average value of repeatedly measured results.

Judges whether each result satisfies criterion.

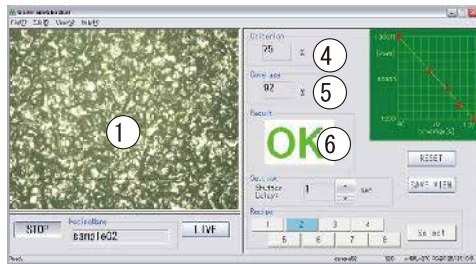


## Operation screen

Access to parameter adjustment for quantification is protected with password to avoid wrong operation by irrelevant person.



<< Measurement mode >>



<< OK/NG mode >>

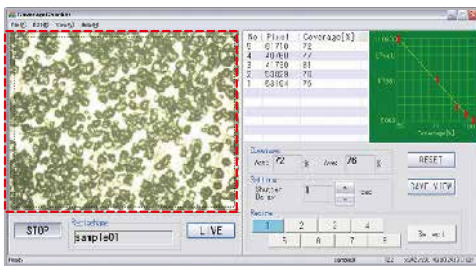
### << Screen >>

- (1) LIVE display screen: Real time camera view.
- (2) Selected recipe name: File name of selected recipe.
- (3) Coverage records: Records of coverage measurement results.
- (4) Criterion: Criterion of pass/fail is displayed.
- (5) Measurement value: Coverage measurement result.
- (6) Judgment: OK/NG result on criterion.

## Saving results

### << Image capture >>

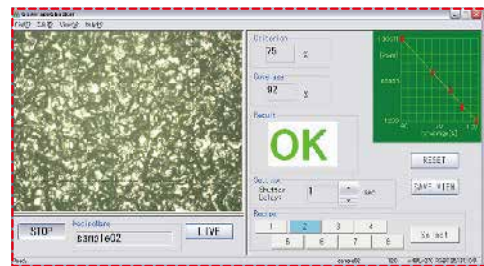
You can capture the image and save in the computer.



<< Image capture (red frame zone)>>

### << Screen capture >>

You can capture the hole screen of both Measurement mode and OK/NG mode,



<< Screen capture (red frame zone)>>



**TOYO SEIKO** CO.,LTD.

Toyo Seiko Co., Ltd.

3-195-1 Umaganji Yatomi City Aichi prefecture

TEL : +81 567-52-3451

FAX : +81 567-52-3457

URL <http://www.toyoseiko.co.jp/>

[toyo@toyoseiko.co.jp](mailto:toyo@toyoseiko.co.jp)