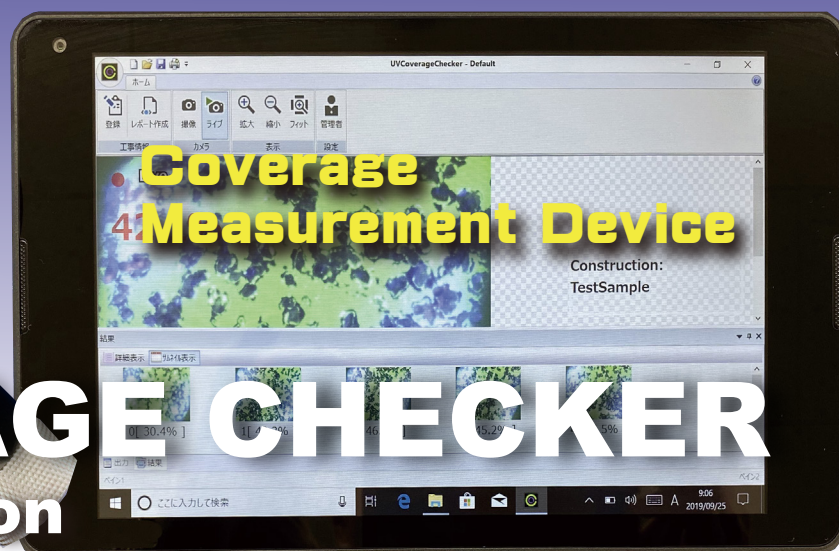


COVERAGE
CHECKER



COVERAGE CHECKER

UV light version

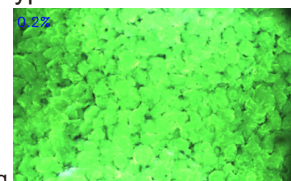


Outline / Feature

Coverage Checker is designed for easy and precise coverage measurement instead of human eyes.
UV light version measures coverage by the fluorescent paint peeling rate, using 375nm UV light.
This enables to measure the coverage of surface which was difficult to measure with normal type TOYO SEIKO Coverage Checker.

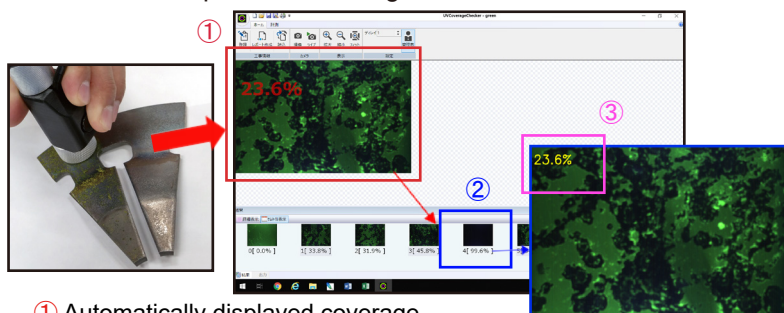
- A surface that already has peened indentations, such as double shot peening.
- Surfaces that are not easily indented, such as carburized parts.
- Surface with the oxidation scale by heat treatment.

Surface example of fluorescent paint applied after 1st shot peening, getting ready for 2nd shot peening.



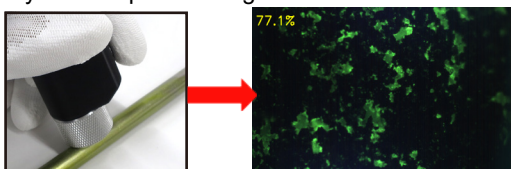
Function

- Easy to create recipes (measurement conditions).
One recipe for one fluorescent paint will be enough.
- Automatically displays the coverage% of the camera positioned surface.
- Able to capture all coverage record in PNG file.



- ① Automatically displayed coverage
- ② PNG image of captured coverage display
- ③ Coverage % displayed on captured image

Able to measure curved surface (min ϕ 10mm)



Option

DUST & DRIP-PROOF camera

Protects the camera body from dust and water drops during outdoor operation.



Size : L190 x W55 x H55mm

Camera Specification

Size / Weight	L165 x W50 x 50mm approx.200g
Light source	UV LED light (wavelength 375nm)
Fluorescent paint	Fluorescent paint excited by 375nm light source
Measuring surface size	4.8 x 3.6mm (640 x 480 pixel)
Measurable curvature	min ϕ 10mm
OS	Windows 10



World Leading Company for Shot Peening

3-195-1 Umaganji, Yatomi-city, Aichi 490-1412, Japan
TEL +81-567-52-3451 E-mail toyo@toyoseiko.co.jp



TOYO SEIKO NORTH AMERICA Inc.

World Leading Company for Shot Peening Media

3507 N Olive Rd, Suite E, South Bend, IN 46628, USA
TEL +1-574-288-2000 E-mail sales@toyoseiko-na.com

Website

<https://toyoseiko.co.jp/en/>